

RNI REGD NO MPBIL / 2002 / 10269

Postal Regn. No.PCE/049/2016-

18/ 10269 Vol. 206

May 2022 – July 2022

Vastu Times

Journal of Indian Traditional & Energy Architecture



Lap of Luxury or
Circle of Misery



A note of Remembrance

A year has gone byhowever it still feels like tomorrow, Wish time stood still promises unfulfilledand lots of unsaid words.

Mayank takes this page to remember his beloved wife – Priti , who left us for heavenly abode on 19th. April 2021.

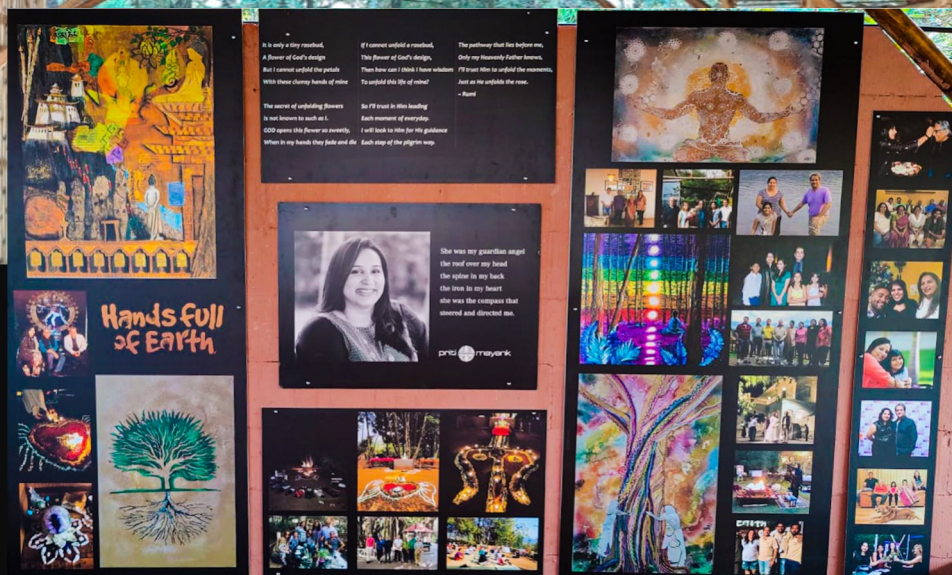
“ Those we love don’t go away, they walk beside us every day. Unseen, unheard, but always near; still loved, still missed and very dear ”.

Last year has been a difficult journey of my life, however as they say Life is a celebration and Priti truly embodied the same in mind and spirit, so it would not be incorrect to say that it’s her eternal presence that I have felt and still feel will help me to continue to move ahead with the same exuberance that was her nature, of course her absence has created an abyss so deep, that can never be fulfilled.

I remember her, not only for her strength, her charismatic charm, but her deep fond love for adventure, her nurturing towards the kids, who are so much a part of her. She was a successful career woman with great entrepreneur skills, who walked by my side and helped me achieve my goals.

I would like to pay my heartfelt tribute and express my love and gratitude to her for being a part of my journey and hoping that she continues to guide me in spirit

Miss You



Priti Memorial @Bhor

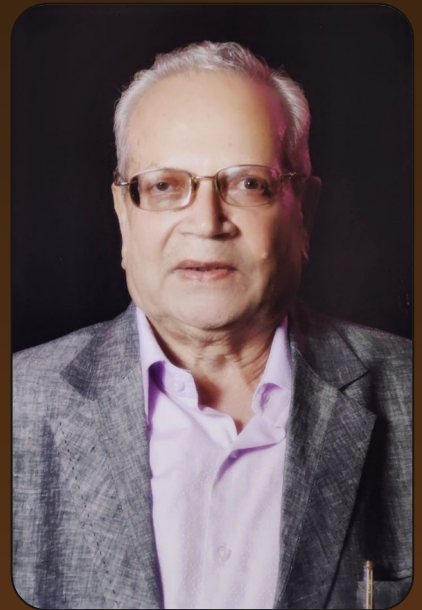
Remembering Dad

Another tragic occurrence, when I lost my father on 30th. Oct 2021, as they say life works in mysterious ways and leaves it to us, to figure out the rest.....

Dad has always been a powerhouse of energy, imbibed me with the values and the correct virtues to make me what I am today.

He has been pillar of strength, support and always standing tall like the light house guiding me. His zeal to be innovative and to lead by example has been an inspiration for me to follow.

Not only was he a successful industrialist but an equally passionate philanthropist and was socially active. He would be deeply missed and remembered by all of us. *Mayank*



Editor's note –

They say time flies...but does it really? To me, time takes its own TIME, follows its own course and during this journey teaches us to deal with life, to work upon our weakness and lets us explore new strength's which we never knew existed.

It makes us count every moment every second...create and cherish moments of joy or throws us in unfathomable depths of sorrow.

Wishing Mayank Sir, times of joy , happiness , affection and success .

This issue is in continuation to the previous issue, wherein we were talking about the sources of electromagnetic radiation and its harmful effects. Simple solutions to prevent or reduce the exposure.

However, in this issue we talk about the serious and the genetic changes that are occurring due to the prolong exposure to these radiations, and how over a long period of time are interfering with the body and changing the overall framework. The rise in certain diseases, drawing an inference of having a direct co-relation to these electrical pollutants being the root cause.

We will also be talking about the external sources that are silently killing us from within, by bringing about irreplaceable genetic changes in our bodies.

Lastly we will also look at solutions to address this grave problem.



Vrushali Kute
Editor &
CEO Vastuworld

Lap of Luxury or Circle of Misery

Look around you, people staying in luxurious apartments – filled with all the amenities what the heart could desire...however, at a closer glance are the people residing in it healthy and happy?

Let's dwell on this to a deeper level.

By now we know that there exists a natural geomagnetic field, which is a complex structure, resulting from the interaction between the simple magnetic field of the Earth and the energy that pours from the sun.

This geomagnetic field is a shield protecting the Earth from the full force of the Sun's energy. Without it life would not exist.

But since humanity has learned how to generate and manipulate electromagnetic forces, we have created these unnatural electromagnetic fields beneath this shield, which in turn have shown to have unfavorable biological effects on us.

While in the last issue we discussed the harmful biological effects from exposure to abnormal, man made electromagnetic fields from a research point of view, however in this issue we will discuss the medical evidence supporting the same.

In theory, a disease that suddenly appears out of nowhere may be caused by a genetic change in a preexisting microorganism (a bacterium or virus) that creates new pathological characteristics. Or, it may be caused by major declines in resistance to disease, making people susceptible to attack by microorganisms previously incapable of producing disease – one such case could be Coronavirus.



High Tension wires extremely close to High Rise luxurious apartments

Electromagnetic - Hypersensitivity Syndrome



People with this syndrome may display an abrupt appearance of the said symptoms – dizziness, nausea, headache and severe fatigue, inability to concentrate and sometimes difficulty in vision. People experienced these kind of symptoms and over a period of time become sensitive to many common devices like TVs , computers , stereos , fluorescent lights, mobile phones , high voltage power lines etc .

As with any medical condition, there is a range of severity, and in this case with repeated exposure some patients develop severe neurological responses, depression, decreased memory, sleep disturbances.

Autism

This is considered to be a result of an actual biological injury or insult to the brain occurring during fetal development. The co-relation of the onset of this disease to increase in exposure of electromagnetic energy during pregnancy cannot be ruled out.

Causes of Certain fetal or Newborn defects.



Many newborns are exposed to abnormal electromagnetic fields in hospital nurseries and intensive care units for premature infants. The cells of the brain and central nervous system are particularly sensitive to abnormal fields. The developing central nervous system of the fetus or the newborn is particularly sensitive. For the first few months of life, the brain of the newborn infant is said to be plastic, because it is rapidly changing and making new connections and anatomical arrangements. Exposure of the brain to abnormal electromagnetic fields at this time may result in either the production of abnormal connections or actual permanent anatomical changes.

The pineal gland is the principal structure in the brain, which is directly sensitive to the Earth's magnetic field. Since this gland produced chemicals like melatonin, dopamine, serotonin and many such psychoactive chemicals, its abnormal functioning may lead to a variety of permanent neurological and behavioral abnormalities. One risk associated with lower levels of melatonin in newly born babies is the Sudden Infant Death Syndrome (SIDS) , wherein lower than normal levels could have resulted in depression of respiratory controls and affected their breathing .



Changes in pre-existing diseases

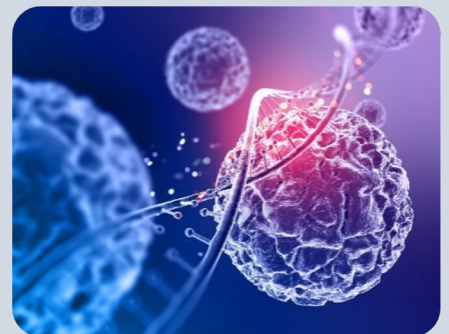
Cancer –

Similar to the above, the aging brain cells are also sensitive to electromagnetic field exposure. Increase in diseases like Alzheimer's , Parkinson's over the years , also suggests that environmental factors also play a crucial role in this rise.

In spite of improvement in medical facilities and diagnosis, however there has been an exponential increase in Cancer patients over the years. It has been observed there have been increase in cancers of the tissues, with high rate of cellular multiplication. Moreover, these cancers are not only increasing but are affecting the young generation at the same rate, which is really alarming.

Mental diseases -

Another alarming trend seen over the years is the rise in mental disorders in people below the age of forty-five, and a direct link to suicide, depression. This has lead us to believe that there is an influence by some environmental factor at the basic levels of mental functioning, wherein the onset is seen during the early stages of life. Lifestyle changes, increased exposure to devices like television sets, wifis , mobile phones from childhood has created many life altering biological and psychological changes .



Increase in Osteoporosis and bone fractures –

One of the more recent studies have shown a correlation between a significant increase in Osteoporosis and bone fracture and the increase in cell phones and their infrastructure, as they may be irradiating our bones as well as the rest of the body.

The reason being – as mentioned by Dr. Robert O Becker (The Body Electric), - tiny atoms of copper help in binding the main components of the bone, and osteoporosis could be resultant when there is a removal of this copper. This occurs due to the change in the electromagnetic binding force which could have been brought about by a change in the overall electric fields throughout the body or from a change in those surrounding the body in the environment.



Where do we go from here?

As we have seen earlier also, that with the advent of technology and development of more and more gadgets to make our lives supposedly easier, EMF radiation is becoming an inevitable evil which is slowly creeping into our homes and netting us in a spider like web, where escape seems difficult if not impossible.

Looking at the present scenario, the solutions need to be based on two aspects –

One is to avoid or limit the exposure to as much as possible. Second is a change in the basic philosophy of medicine and medication.

So while we have dwelled on how to limit exposure in the previous issue. Like cutting down on radiation emitting devices, shifting to manual devices like toothbrush / razor from their electronic versions, maintaining a safe distance between the electronic device – sitting away from TV set, keeping mobiles at a safe distance while sleeping.

Even after doing all this there may exist a lot of external factors which may not be in our hands. Strong sources of EMF radiation also include – High Tension Wires / Mobile towers / Radio towers etc.

Residences near transformers or high intensity power generating units, are also hazardous to the Individuals staying in them.

Take the example of this Very high end residential complex, however can you imagine what bodily harm would be caused due to the proximity of the passing High tension line.

**Since you cant's beat
them
the solution lies in
shielding ourselves.**

**Over a decade
Vastuworld has been
offering shielding
solutions**

Shielding paints for walls –

Electrically conductive with special
grounding technique.

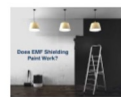
Wallpapers and window screens / films -

Canopy / tents / grounding sheets /
fabrics etc.

**These are extremely efficient
German made shielding solutions
and offers protection against the
electromagnetic radiation coming
from external sources.**



Carbon coatings – Shielding Paints



What are RF Shielding Paints

For shielding of walls, ceilings and floors.
These **RF shielding paints** are electro-conductive coatings for
the **shielding** against high-frequency (HF) radiation and/or low-
frequency (LF) electric fields.

It is highly effective at protecting against high-frequency **EMF**, and low-
frequency radio fields and microwaves.



Shielding is used both for immunity (protecting
against external interference) and emission
(preventing interference to be radiated).

Properties of Shielding Paints – High Tech Solutions for protection against electromagnetic radiation .



- Completely Carbon based HF shielding paint for interior and exterior application .
- No problems with corrosion or oxidizing metal particles after some years of use .
- Easy to Handle .
- Absolutely free of toxic solvents and additives .
- Wide range of applications – Protection from HF – radiations – Cellphones , TV , Radio , Wireless networks .
- Protection from Electromagnetic fields from power supply lines etc.
- Applications in – Schools , Nurseries , Hotel rooms , Hospitals , Industries .



Let's come to the second solution– which involves working upon the body. Since here we are dealing with the effects of electromagnetic energy on the energetic systems of the body, the new scientific paradigm that lends support to the basic concepts of energy medicine provides a good place to start.

Practitioners need to explore the therapeutic possibilities of utilizing the body's own energetic systems to treat new conditions. The growing tendency to integrate the concepts of energy medicine with those of orthodox medicine must be encouraged. There have been many pioneers in this field, Dr. Rene Naccachian, who has done extensive research and has been practicing bioenergetics .

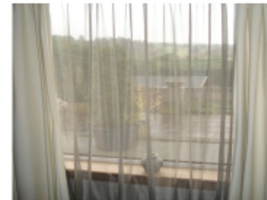
Shielding Fabrics

- Outstanding shielding characteristics ,used to protect living spaces and sleeping areas from HF Radiation .
- Typically used for indoor applications , window shields , doors .
- Curtains , Net curtains , Canopies etc.



Shielding Fabrics

- Outstanding shielding characteristics ,used to protect living spaces and sleeping areas from HF Radiation .
- Typically used for indoor applications , window shields , doors.
- Curtains , Net curtains , Canopies etc.



SILVER-TULLE | Shielding fabric

Semitransparent fully silvered nylon mesh as net curtain or for canopies. Durable, crease-resistant and groundable.

Semi-transparent strong silvered knit fabric for the protection against high-frequency (HF) and low-frequency radiation (LF).

Typical application as **net curtain**, as **room divider** in laboratories, medical practices, etc. and due to the highest wash ability to sew a bed canopy.



Shielding canopy

Sewn from a high-quality silver fabric with 47 dB attenuation.

BSP1 | SAFECAVE Shielding canopy

This product shields **high frequency electromagnetic fields (HF)**.

BSK1 | SAFECAVE Shielding canopy

- This product shields **high frequency electromagnetic fields (HF)**. The indicated dB-values apply to 1 GHz
- This product with an electrically conductive surface shields **low-frequency alternating electric fields (LF)**. For this purpose a **grounding is necessary** .



Shielding Solutions

Shielding canopy | Double bed
SILVER-COTTON



Available fabrics - **Silver-Cotton:** Low priced cotton fabric with high shielding attenuation. Good light transmission and air permeability, the fabric crinkles somewhat. Shielding attenuation 42 dB. Groundable with grounding plate hook- and-loop GV.

Silver-Tulle: High-end fabric with the highest shielding attenuation. High light transmission and air permeability, mechanically stable, free of crinkles. 48 dB shielding attenuation. Groundable with grounding plate hook-and-loop GV.



Canopy base |
Double bed |

Properties

To achieve a full Faraday cage with a canopy, it is also necessary to shield from below. **This canopy base has a very high shielding attenuation, lies very flat and is delivered including the entire necessary grounding material.** Scope of delivery includes, among other things, grounding plug GP1 for schuko sockets E/F and the canopy connector GCMV for canopies (you can choose if you want to connect the canopy with a velcro or magnet).

These are some of the shielding solutions. Mayank and team have been successfully providing these shielding materials for over 20 years. To name a few – big brands like Zara , Amazon etc and lot of luxury apartment and homes in Mumbai and Pune .

Ar. Mayank Barjatya – completed his bioenergetic studies under the guidance of Dr. Rene in France in the year and is a bio energetician himself. He has been practicing this for more than 10 years.

This has also helped him to introduce 48 infinity energy – wherein the 48 bhaktambar stotras have been embedded with special cyma frequencies. In fact, very recently he had conducted a 5-day extensive workshop on bioenergetics. The aim being that more and more vastu consultants, alternative modality healers learn and practice this.

Going forward the future of medicine lies to a great extent on Bio energetics, since the problems cited above are more to do with the shift in the vibrational frequencies or the imbalance of the energies, for which there is no allopathic medication.

INFINITY BIO-SYMBOL

HEALTH HARMOZINER

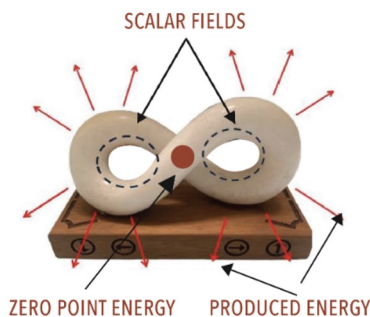
FEATURES

- Connects with the Electromagnetic waves of an individual
- Creates resonance with body & environment
- Can be used by all ages
- Most beneficial during sleeping

MATERIAL

- Natural stone containing 'Prana'
- Carved out of a single piece of stone

Infinity Bio-Symbol helps discover zero point energy fields of vital Scalar Waves.



This is an environment enhancing product & should not be replaced with medical care.

Boost your
immunity &
fight diseases!



WORKS THROUGH SCALAR WAVES

- Generated in the body
- Protects from the negative effects of solar radiation & electromagnetic stresses
- Produces a neutral field capable of deflecting harmful frequencies
- Provides an energetic communication system that connects all cells in the body

BIG SIZE (5"-6")

- Generates vital emotional & mental scalar waves till 3-5 metres in all directions
- For big rooms, offices, shops, showrooms

SMALL SIZE (3"-4")

- Generates Qi body causal scalar waves till 2 metres in all directions
- For good sleep, meditation, fast recovery



9822573102

www.vastuworld.com

For more than two decades – Mayank Barjatya has researched and developed lot of bio resonance remedies, these are person specific and address the issue with regards to balancing of energies within the body.

INFINITY BIO-SYMBOL 4 CARS

The use of technology in vehicles creates energy blockages causing misalignment of chakras & a shift in the energy centres of the body. The stress thus generated inside can make our nerves hyper & may result in accidents or traumas.
IB4C takes care of this!



Size 8 cm x 5 cm x 5 cm

The infinity bio-symbol 4 cars is stuck on the dashboard using an adhesive or a double sided tape.

• Protection against electromagnetic pollution inside the car.

• Made of natural elements & sacred geometry



For more details
contact -9822573102

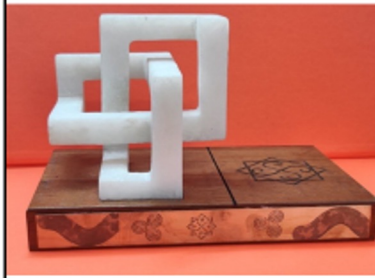


Common sources of electromagnetic pollution

EEL - Entangled Emotions Liberator

- Releases repressed emotions
- Unknots tied up strings
- Opens up opportunities
- Stabilizes intertwined feelings

Science - The geometry and materials used in the EEL work together and form an energy system that helps untie barriers.



Labyrinth Harmoniser



- A Copper based remedy
- Protects from dynamic negative energies
- Helps focus
- Protects from curses and bad vibrations from people / spaces
- Useful for anyone who fears taking risks

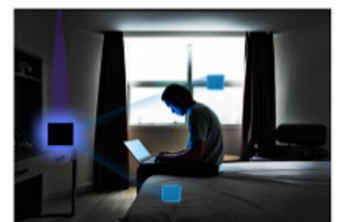
Should be kept in the right side pocket or wallet. Can also be placed anywhere within 1 meter of the user.

Black Box Disruptor -

Based on Naduhl Philosophy this black box has amazing quality to absorb all negative vibrations, influencing health & harmony.



- Absorbing excessive electromagnetic radiation and generates harmonized energy in IR form
- Effective for absorbing excessive and powerful electromagnetic radiation (light, heat, high frequency radio waves)





श्री दिगम्बर जैन उदासीन आश्रम ट्रस्ट इन्दौर के अंतर्गत कुन्दकुन्द ज्ञानपीठ, इन्दौर द्वारा

सिद्धिभूवल्लभ शोध
एवं प्रशिक्षण केन्द्र

गौरवशाली प्राचीन जैन-विद्या पर प्रथम बार सुन्दरी-लिपि प्रशिक्षण शिविर

प.पू. क्षुल्लक श्री 105 विनयनन्दीजी महाराज के निर्देशन में

४८ में से आपकी कौन सी भक्तामर ऊर्जा Missing है ?

जानिए

जीव ऊर्जा की मशीन से आपकी ऊर्जा की अभिव्यक्ति तथा विश्लेषण
साधक मयंक बड़जात्य के द्वारा कराए

समय : रात्रि 7.30 से 8.30 तक : 3 मई 2022 से 17 मई 2022 तक ।



48 अनंत ऊर्जा
कुन्द कुन्द ज्ञान पीठ इन्दौर



४८ में से आपकी कौन सी भक्तामर ऊर्जा Missing है ?
जानिए

दिनांक : ३, ४, ५ मई प्रातः ८ से ९:३०
श्री दिगम्बर जैन उदासीन आश्रम ट्रस्ट म.ग रोड इन्दौर

मंत्र चंत्र : तंत्र : जैन सिद्धांत की विज्ञानिक दृष्टि से प्राप्त करें

- पवित्र ज्यामिति के अनंत ऊर्जा कार्ड
- सोलफिगिओ फ्रीक्वन्सी की ध्वनि और
- जैन वनस्पति विज्ञान से बने सुगंधित तेल

जीव ऊर्जा की मशीन से आपकी ऊर्जा की अभिव्यक्ति तथा विश्लेषण
साधक मयंक बड़जात्य के द्वारा कराये

भक्तामर की ऊर्जा का विज्ञान जानने का सुनहरा मौका !!
आज ही सम्पर्क करें : 9822573102, 9175907686
www.48infinity.com

स्थान : श्री दि. जैन उदासीन आश्रम ट्रस्ट, 584, महात्मा गाँधी मार्ग, इन्दौर 452001

इंजी. अनिल कुमार जैन
डॉ. अरविन्द कुमार जैन

निदेशक - डॉ. सूरजमल बोबरा
डॉ. अनुपम जैन

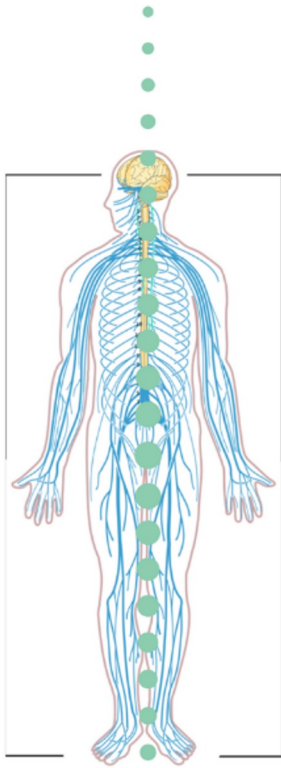
समन्वयक
श्री अमित कासलीवाल

Events at a glance

May – 3rd to 5th. – Free camp on 48 Bhaktambar energy ,organised by Kund Kund Gyan Peeth at Udaseen Ashram Indore . All the three days, Mayank gave a talk on the subject, as well as complimentary Energy analysis – to find the missing Bhaktambar energy was done for all the attendees.



Bio-Energetics



Building Biology



5 DAYS

**BIO-ENERGETICS
& INNER BALANCE
WORKSHOP WITH
QUANTUM
RESONANCE**

Venue - Prithwe
Earthing Centre ,
Kurunji Bhor

**17th. to 21st.
June**

PREVENTING PERSONALISING POTENTIALISING

5 days, 40 hours of Self Awareness

physical session 7-8am

morning session 9-1pm

evening session 4-8pm

night meditation 9-10pm

learning

HUMAN ENERGETIC SCANNING USING H3 GOLD ANTENNA
ORGAN, HEALTH, ESOTERIC, ASTRO & CHAKRAS PROTOCOL
BRAIN STATE, DNA & LIGHT PSYCHE PROCESS FOR HEALING
HEALING NUMBERS, FREQUENCIES & CYMATICS AS SOLUTIONS
48 INFINITY ENERGY SCAN USING TREE OF LIFE & SOLFEGGIO SOUND

additional

Catalyse the human brain to positive thinking
Unlock the power of subconscious mind
Manifest remedies to act on the mind & body
Decode influence of Vastu/Space on Genetics & DNA



5 days include

YOGA SUTRA SESSION | TAI CHI SESSION | MEDULLA OBLONGATA SCANNING.

PREVENTING PERSONALISING POTENTIALISING

Workshop at Prithwe



Day 1

Introduction to Bio-Energetics, Morphic / Harmonic Resonance & Muscle Memory Processes



Day 2

Techniques to detect energy fields, Bio-energy flow with H3 Gold Lecher Antenna, Introduction to Energy Medicines & the Medula Oblongata



Day 3

Introduction to Quantum Physics, the 3 P's and the Bio-Energetic protocols for using the H3 Gold Lecher Antenna.



Day 4

Introduction to the Bio - Protocols of brain state energy measurements & the Science of Quantum Fluids.



Day 5

Practical Utility of Bio-Energetics Cymatics & Introduction to the 48 Infinity Energies and VW Bioresonance remedies



ADDITIONS AT PRITHWE

FOREST COTTAGES

What better way to experience the true sense of Nature, than to live in the lap of Natural surroundings?

Staying in these forest cottages, will give you just this feeling. Thick trees around the cottages, shimmering waters of the lake at a distant, the stillness of the night broken by the occasional sounds of the nocturnal animals, and waking up to the melody of bird songs acting as natural wind chimes.

Prithwe's

Close to Earth Experience

Located in Bhore Kurunji, by the Yelwanti River. Prithwe Earthing Centre is designed using local materials and leaves zero waste behind.

Why Local Natural Materials?

Locally available basalt / Laterite rock is used for the foundation of the huts and other landscape features. Use of years old Mangalore Tiles brought from the village also bring out all positive morphogenic energy into the space as well as the other perks of using Mangalore Tiles. Use of Kadapa Tiles on floor also connect you to Earth better as the plinth is also made of Natural Materials.

Grey water Treatment.

The black water from the toilets is treated in a bio-reactor, the biological agents in the septic tank consume the human fecal matter and converts it into nutrient rich grey water. This water is further used for irrigating the plants. The flush tanks of the WC are of low discharge. The taps and the showers too have low discharge aerators installed to minimize and effective utilization of precious water. This also helps in reducing the electricity utilization.



1. MAHI, मही

Mahi/ Mahie मही -means earth, powerful

Welcome to mahi, a pink themed space depicting power, bringing you close to the earth.

The red color gives an instant energy boost, kindles happiness which Mahi itself means. Mahi is a cozy knit space which gives you a sense of power just by living in it.



prithwe
EARTH AND US

ADDITIONS AT
PRITHWE
Forest Cottages



2. Vasudha, वसुधा

Welcome to Vasudha, a lilac blue themed space bringing happiness and tranquility and you closer to the earth. A space that brings out your inner peace just by living in it



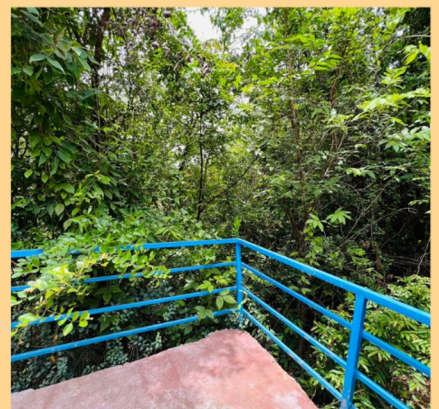
ADDITIONS AT PRITHWE

Forest Cottages



3. DHARA, धरा

Welcome to Dhara, an orange themed space depicting Energy and Enthusiasm, and also brings you closer to the earth. धरा, meaning the Earth or Flow. Dhara is a space which gives you the view of the beautiful forest around you.



4. DHARANI

धरणी



Welcome to Dharani, a green themed space depicting success, Dharani (धरणी) refers to the "earth" also means Success while the color green helps improve relationships, build trust, and develop empathy. Dharani is a space which gives you a feeling of being surrounded by forest.

5. MEDINI

मेदिनी



Welcome to Medini, a yellow themed space depicting character, conduct and behavior. Medini refers to the "earth" while the color Yellow helps realize your full potential and calms the wandering mind. Medini is a space that gives you a beautiful view of the lake nestled between the mountains.

Mayank has always been extensively involved and propagating the use of Natural building material.

Currently has done lot of projects involved using bamboo and other sustainable building material.

From Conception to culmination of the project all executed under the guidance of Mayank himself.

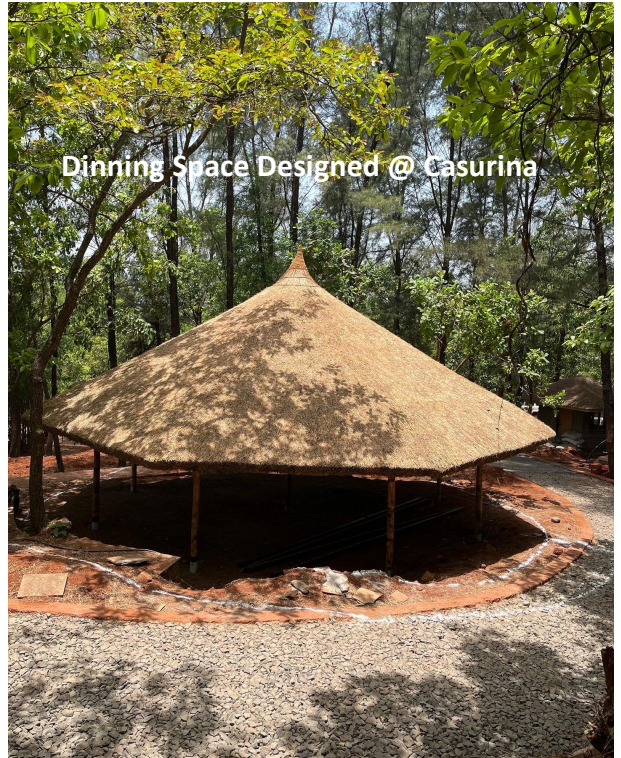


Beautiful Patio designed for a private client

Bamboo Skeleton
false ceiling @
Club house



Dinning Space Designed @ Casurina



Outdoor Patio Designed @ Casurina



BackYard Designed @ Farmhouse



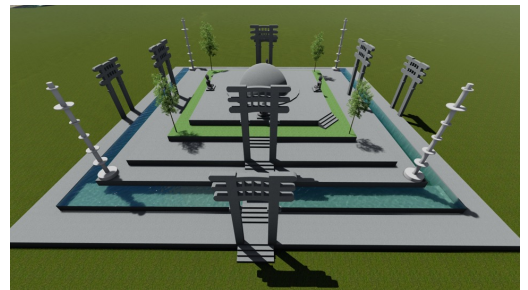
Jain Temple Architecture

Research on Jain Stupa as true Jain buildings for prayers & meditation



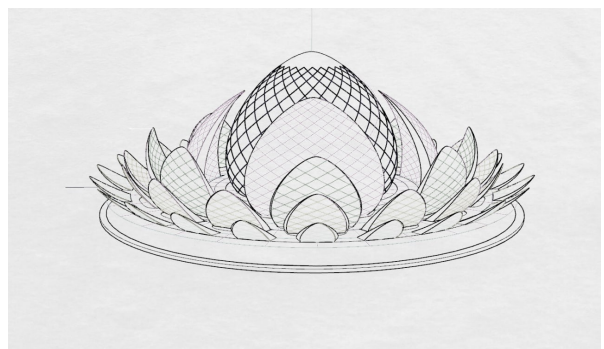
Temple and Stupa

There are 2 forms of energies: first is the energy which we receive and absorb, it's a centripetal energies, other is the energy which is within us and we just need to use and eliminate, it's a centrifugal energies. Temple and Stupa both function as centers of energy. A Temple is a place where one visits to gain energy from outside while a Stupa is an enclosure essentially for developing one's own energy from inside.



Ongoing - Project -

Charan Paduka Lotus Stupa @ Anand Tirth Chichondi near Pune, following vision and Guidance of Upadhyaya Praveen Rishiji Maharaj Saabm an iconic structure following science of Sacred Geometry, Facts and Harmonics is getting conceived by Mayank & his team



Follow us on



Our Websites –

www.vastuworld.com

www.vastuworldlearning.com

www.48infinity.com

www.prithwe.com



Contact Details –

9822573102, 9175907686



Facebook –

Energy Architecture



Subscribe on Youtube -

- Vastuworld
- Mayank Barjatya



Instagram

–
vastuworld / 48infinity_
bhaktamar_energy
Prithweearththingcentre